



Engineering Projects Consulting

Via Breda 4/6,
20006 Pregnana Milanese (MI) - Italy
Tel: +39 02 8965 1220 / 21
email: Info@epcmilano.com
www.epcmilano.com

together
from the idea to
plants in service



WHO WE ARE



Engineering Projects Consulting s.r.l.

we are a consulting company for designing, construction, commissioning, qualification and service of technical assistance for national and international projects.

The company borns as a natural evolution of “General Progetti” present on the market since 1995 for industrial engineering and technical assistance for chemical, petrochemical, electrical and automation plants.

In 2015, the activities expanded to the pharmaceutical and fine chemistry sectors.

In 2020, the branch of Munchen (DE) was opened to cover the German market.

In 2021, the operational headquarters open in Pregnana Milanese (MI), built in an area of 1.500 m² including offices and production unit.

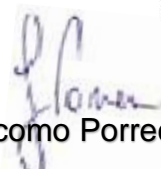
We Are Specialized in HVAC (included the Clean Room) plants, Black & Clean Utilities and Process systems made in accordance with customer needs

Our partnership with specialized companies in construction allows us to be flexible and available for the clients' needs.




Savino Carlone




Giacomo Porreca

*We come from **COMMISSIONING.***

*For this reason, **OUR DESIGNS***

*and **INSTALLATIONS** are*

in accordance to the

NEEDS of the FINAL USER.



*We apply **SOLUTIONS**
BEFORE problems appear.*

*Our **EXPERIENCE**
teaches us how to handle them.*



Our

Engineering

is based on real Client's needs.

We provide

BASIC and DETAIL

Engineering,

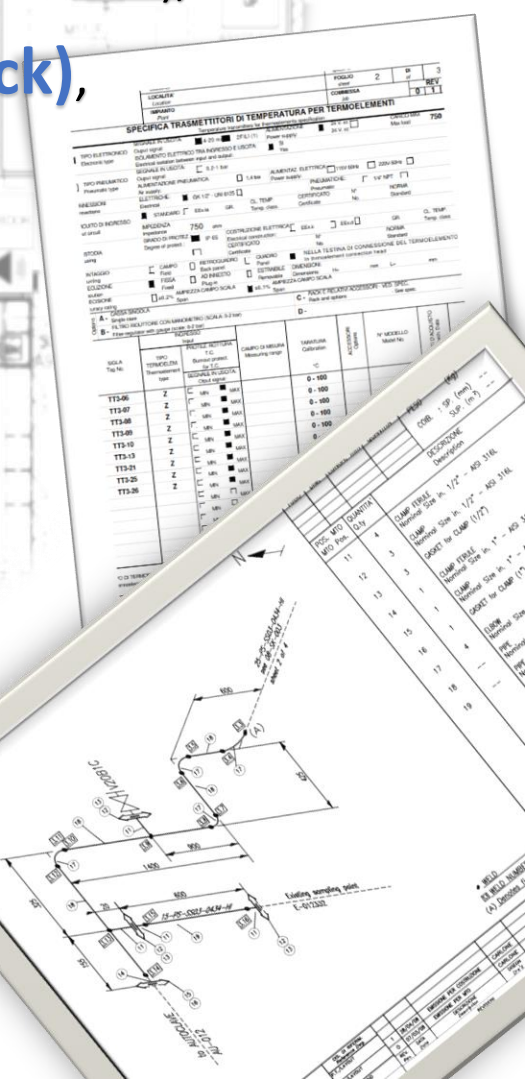
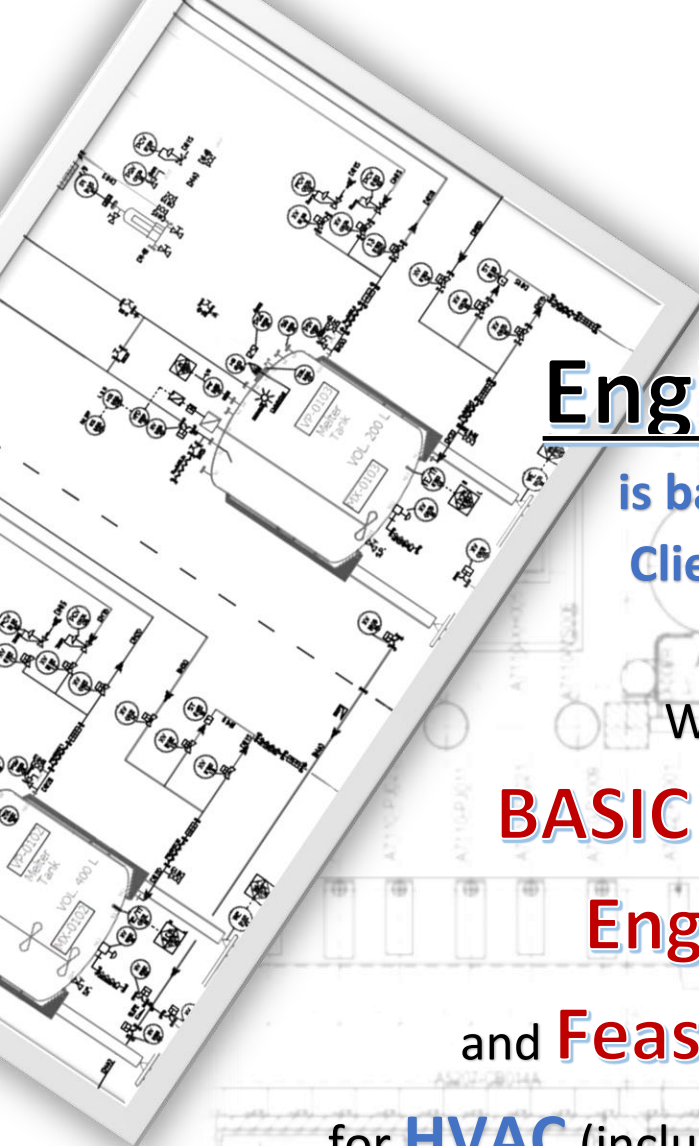
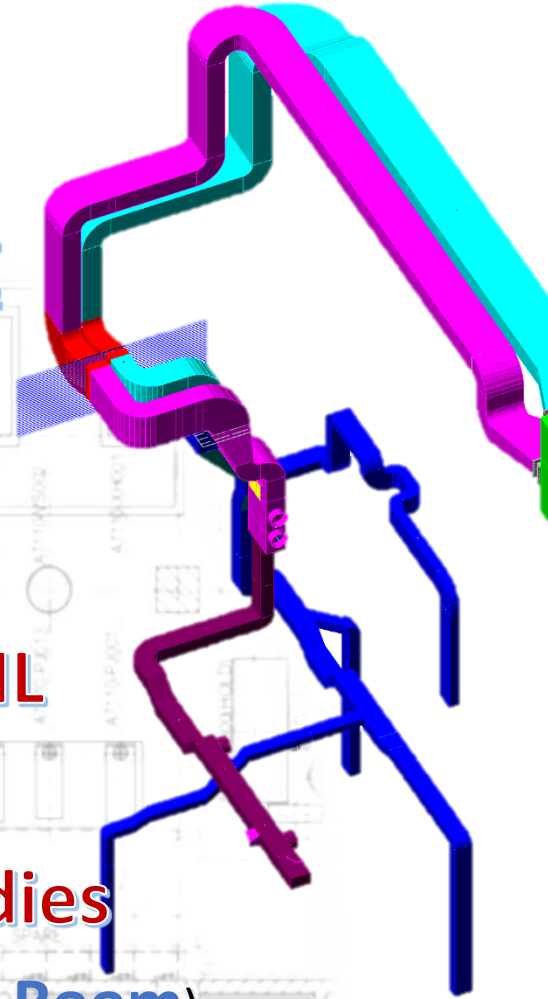
and **Feasibility Studies**

for **HVAC** (included the **Clean Room**),

Utilities (Clean and Black),

Process plants

and packages.



Our Engineering listens to **Needs and Requests**

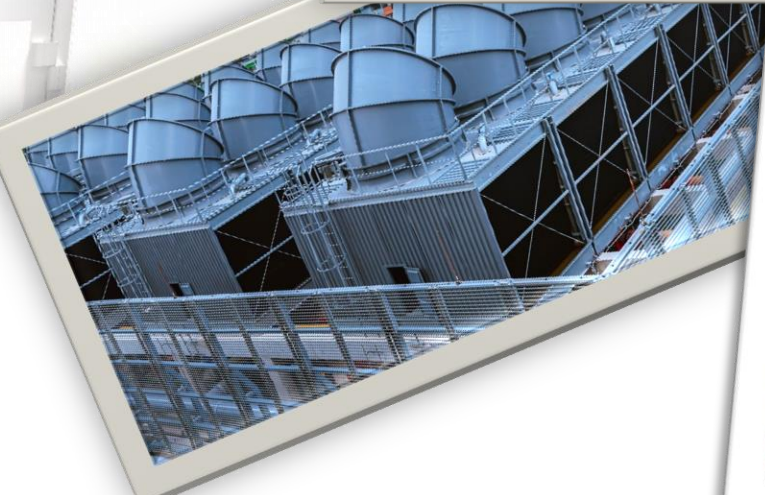
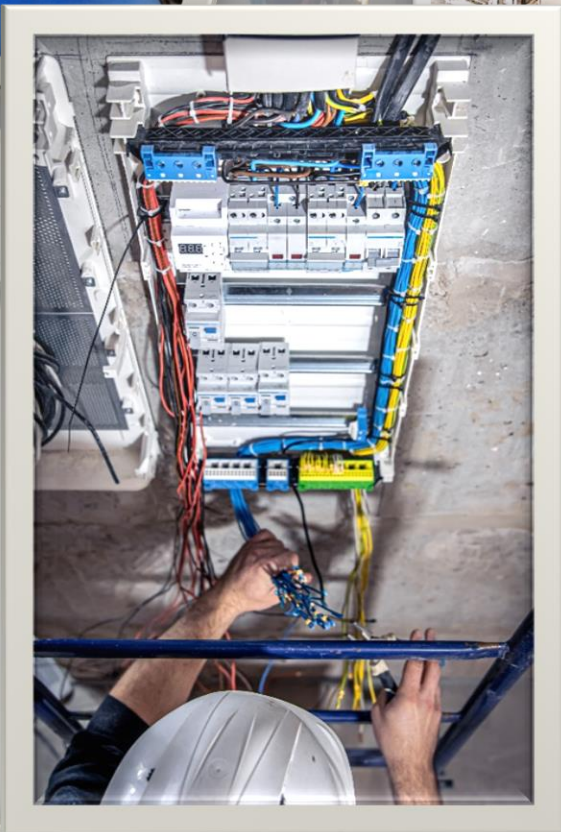
of final users,

that will use plants for production, maintenance, qualification and calibration activities



Construction

We provide turn key projects
for
Plants and Packages (Skids).



Commissioning

with an engineering approach that is well planned, documented and coordinated; we follow all steps from the pre-commissioning, SAT, Commissioning to the final handover to clients of plants, equipment, and systems.



Qualification

process used to demonstrate and document with evidence that the pharmaceutical critical systems are appropriate to their purpose.

DQ Design Qualification

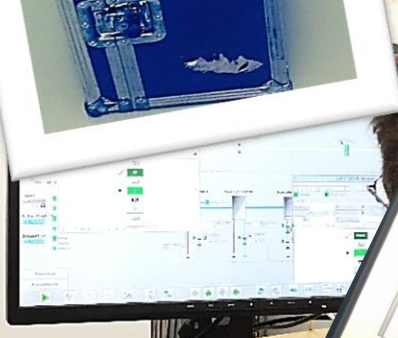
IQ Installation Qualification

OQ Operational Qualification

PQ Performance Qualification.

Calibration

field verification and configuration of process instrument to confirm the accuracy and performance.



N°	Tempo	Data	Stato	Testo
A 7	17.29.11	12/08/2020	F	Pulsante emergenza premuto
A 3	10.38.20	12/08/2020	E	Bassa depressione da PSL F3A95
A 3	10.37.55	12/08/2020	E	Bassa depressione da PSL F3A95
A 7	8.37.15	12/08/2020	E	Pulsante emergenza premuto
A 7	8.37.15	12/08/2020	E	Pulsante emergenza premuto
A 7	17.41.00	11/08/2020	E	Selettore HSL F3A90 aperto in servizio - po...0
A 7	17.07.19	11/08/2020	E	Selettore HSL F3A90 aperto in servizio - po...0
A 8	17.07.19	11/08/2020	E	Selettore HSL F3A90 aperto in servizio - po...0
A 8	17.03.24	11/08/2020	E	Bassa depressione da PSL F3A95
A 8	16.42.45	11/08/2020	E	Bassa depressione da PSL F3A95
A 3	16.42.45	11/08/2020	E	Bassa depressione da PSL F3A95
A 3	16.42.32	11/08/2020	E	Selettore HSL F3A90 aperto in servizio - po...0
A 3	16.12.26	11/08/2020	E	Selettore HSL F3A90 aperto in servizio - po...0
A 8	16.12.24	11/08/2020	E	Selettore HSL F3A90 aperto in servizio - po...0
A 8	16.11.04	11/08/2020	E	Pulsante emergenza premuto
A 7	12.31.05	07/01/2009	(ER)	Pulsante emergenza premuto

DOCUMENTATION

One of the aspects that guarantees and ensures a quality system, in a pharmaceutical company, is to have a **good documentation management systems** to operate in accordance with the **GMP requirements**

We, **Engineering Projects Consulting**, are aware of it.

We care about our documentation like **technical documents, manuals, procedures (SOP), protocols for commissioning and qualification.**

PROCEDURES

VIOLATIONS

DOCUMENTATION

POLICIES

COMPLIANCE

REGULATIONS

ENGINEERING PROJECTS CONSULTING

ENGINEERING COMPANY
SPECIALIZED
IN
CHEMISTRY AND
PHARMACEUTICAL PLANTS.

*A single reference who,
from the initial idea,
accompanies you
through the design and construction
to the end of commissioning and
qualification of your plants.*



**Via Breda 4/6,
20006 Pregnana Milanese (MI) - Italy
Tel: +39 02 8965 1220 / 21
email: info@epcmilano.com**

www.epcmilano.com